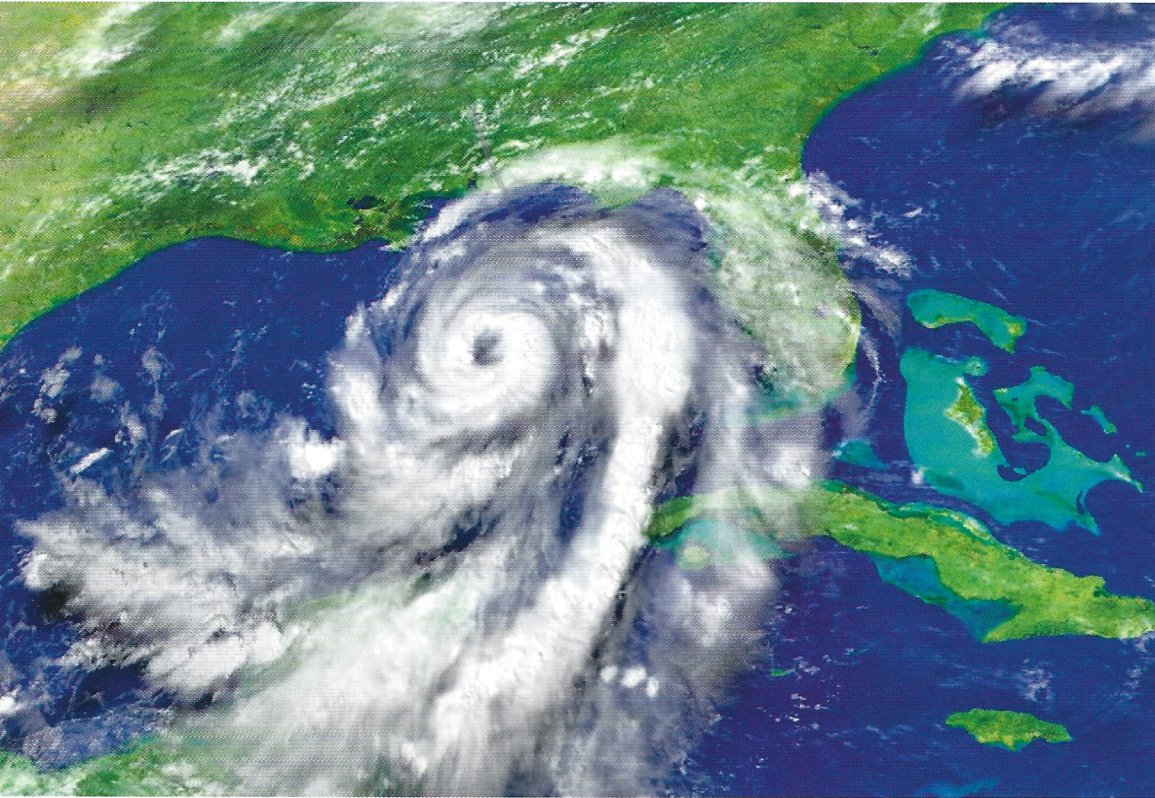


Hillsborough County

# Disaster Preparedness Guide



## INSIDE

Three Steps to Disaster Preparedness

Prepping for All Disasters

Hurricane Season in Hillsborough County  
(June 1 – November 30)

Hillsborough County Hurricane Maps

Important Contact Information



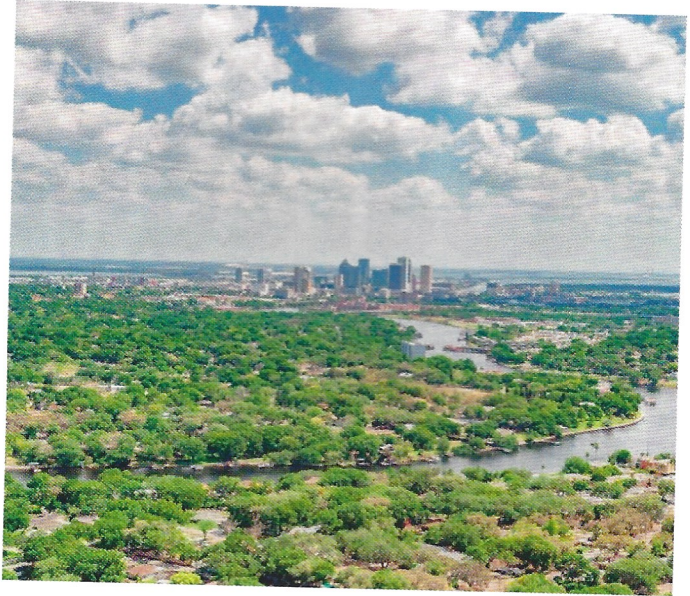
Hillsborough  
County Florida



# Hillsborough County Emergency Management

## A Great Place to Live, Work, and Play

Located in the thriving center of West-Central Florida, Hillsborough County is the Tampa Bay region's largest county, and a major part of the Florida High-Tech Corridor along Interstate 4. Situated between Orlando and the Gulf of Mexico, Hillsborough County features stunning natural treasures, a plethora of entertainment options, major employers, and the University of South Florida, a major research institution, all in a year-round temperate climate. Hillsborough County is a great place to live, work, and play.



## Emergency Management is Prepared for You

The Office of Emergency Management is responsible for planning and coordinating actions to prepare, respond, and recover from natural or man-made disasters in Hillsborough County. The Office manages the County Emergency Operations Center, conducts emergency training, provides public education, helps coordinate the Community Emergency Response Teams, and many other tasks. To reach Emergency Management call **(813) 272-6600**.

## Three Steps to Disaster Preparedness

### 1. Pack a Disaster Kit

Being prepared starts by having an all-hazards supply kit. Take a moment every year to review the items in your disaster kit and restock it with anything you may be missing or that needs to be replaced. A full list of things to pack in your disaster kit is available on **page 3**. Find these items and store them in a waterproof bin to make sure you're ready for any disaster.

### 2. Make a Plan

Where do you go if you have to evacuate? What should you do if you are sheltering in place? What about your business? Is it prepared for a disaster? Having a plan for every scenario is the best way to reduce your risk in case of a disaster. You can find tips on how to make your plan specific to your needs on **page 4**.

### 3. Stay Informed

During a disaster, it's important to stay up-to-date with the latest information from a reliable source. In Hillsborough County you can trust **HCFLGov.net/StaySafe**, the HCFL Alert system, and the County's social media channels at Facebook, Twitter, and Nextdoor to bring you the latest information when it's available. For general County information, call **(813) 272-5900**, the County's main information line. Check out **page 5** for more details.



# 1. Pack a Disaster Kit

## What to Pack

Contents of disaster supply kits vary, depending on whether a family has children, pets, or members with disabilities. Generally, everyone's kit should have:

- **Water** for drinking. Have at least one gallon of water per person, per day, for at least seven days
- **Food** that does not need refrigeration: canned goods, protein bars, peanut butter, etc. that can feed your family (and pets) for seven days
- A two-week supply of **medications**. Keep an updated list of family medications and dosages, along with doctor and pharmacy phone numbers
- **Personal hygiene items** such as toothbrushes, toothpaste, wet wipes, deodorant, toilet paper, face masks, hand sanitizer, gloves, and all other appropriate hygiene items
- **Important documents** including driver's licenses, your insurance agent's name and phone number, and copies of medical information, insurance policies, and property inventories. Keep things digital by taking photos or scanning your documents and saving them on a cloud-based application or USB drive
- If you are evacuating, consider taking **irreplaceable items** such as select photographs or keepsakes
- At least one complete change of **clothing** and **footwear**
- **Blankets** or **sleeping bags** if staying at a shelter or place without sleeping accommodations
- A battery-powered **radio, flashlight, helmet** and **whistle**
- A **first-aid kit**
- **Cash** in small bills
- **Baby items**, formula, food, pampers, wipes, medications and extra clothes, and other additional items as needed



After ensuring your family is prepared and safe, ask neighbors how you can help. They, too, should prepare their homes, pack a disaster supply kit, and have an evacuation plan.

## Additional Resources:

- Visit [HCFLGov.net/StaySafe](https://www.hcflgov.net/StaySafe) for more information on disasters in Hillsborough County and what you should pack in your disaster kit
- Visit [Ready.gov](https://www.ready.gov) for more information about preparing for disasters and the government's role in response



## 2. Make a Plan

### Disaster Preparedness Checklist

It's never too early or too late for Hillsborough County residents to prepare for a major event. Before a storm or other disaster heads this way, follow these steps to prepare your families, homes, and businesses:

**Know your zone:** A flood zone is not the same as an evacuation zone. Learn the difference and find out which zone you are in by visiting [HCFLGov.net/StaySafe](http://HCFLGov.net/StaySafe).

**Prepare your pets:** Stock the necessary supplies for your pet, including a pet carrier, food, medications, proof of current vaccinations, and registration tag.

**Pre-register for Special Needs Disaster Assistance:** Residents with special needs, seniors, and those without transportation can pre-register for shelter and transportation at [HCFLGov.net/StaySafe](http://HCFLGov.net/StaySafe) or [hillsborough.floridahealth.gov](http://hillsborough.floridahealth.gov).

**Get your property storm-ready:** Take steps to get your residence or property ready for hurricanes and other inclement weather.



### Ready Your Business

For businesses, disasters can come in many forms. A new, free tool available to Hillsborough County businesses connects them with help before, during, and after disasters. Businesses can register at [FloridaDisaster.biz](http://FloridaDisaster.biz). For more information, businesses can contact Hillsborough County Economic Development at (813) 204-9267.

Your Business depends on your employees, remember your emergency plan has to include everyone.

### When to Stay and When to Go

In the case of a disaster it may be safest for your family to evacuate, or it may be better to shelter in place. These tips can help you create a plan in case of any disaster.

#### Evacuation Plans

If you live in an evacuation zone, you may be called to evacuate in an emergency. Mobile and manufactured home residents throughout the county must evacuate when an order is called. When creating an evacuation plan, consider the following:

Have a plan on where you will relocate.

- Plan for delays and multiple stops; keep your gas tank full
- Keep cash on hand in case you need to utilize a transportation service
- Plan to evacuate tens of miles instead of hundreds of miles
- Know where to find State Evacuation Routes to get on the highway faster. These signs are usually white and blue and read "Evacuation Route"
- Visit the Hillsborough County Hurricane Evacuation Area Tool on [HCFLGov.net/StaySafe](http://HCFLGov.net/StaySafe) for real time shelter locations and evacuation routes
- Visit [GoHART.org](http://GoHART.org) for bus evacuation routes
- Remember: If you do not evacuate when transportation is made available, the storm may prevent additional vehicles from coming to pick you up



## Shelter in Place Plans

Sheltering in place may be best if you're not in an evacuation zone, or if there is not a hurricane-related disaster. To shelter in place, follow these steps:

- Go inside immediately; take family and pets with you
- Close and lock your doors and windows; close air vents and fireplace
- Turn off your fans, air conditioning, and heating systems
- Turn off all exhaust fans in kitchens, bathrooms, or other spaces
- Go into an interior room with as few windows as possible
- Stay in place until advised it's safe to leave
- Monitor local TV stations, radio stations, [HCFLGov.net/StaySafe](http://HCFLGov.net/StaySafe), and official Hillsborough County social media on Facebook, Twitter, and Nextdoor for updates

## When it's Time to Return

In case of large-scale disaster, it could be weeks before roads are safe and opened, and rescue workers can deliver water and food to the area. It could be weeks before grocery stores and other basic services are restored as well. Stay informed. Wait until authorities say it is safe to return.

If a disaster happens in Hillsborough County, it is your responsibility to arrange loans, insurance, contractors, and other things that you will need to recover. Preparing early and staying prepared is the only way to make sure you'll be ready to ride out any disaster.

## Additional Resources

- Visit [HCFLGov.net/StaySafe](http://HCFLGov.net/StaySafe) for more information on disasters in Hillsborough County, more in-depth tips on how to make a plan, evacuation, and shelter in place information
- Visit [Ready.gov](http://Ready.gov) for more information about preparing for disasters and the government's role in response
- Visit [FloridaDisaster.biz](http://FloridaDisaster.biz) to register your business in case of disasters
- Visit [HCFLGov.net](http://HCFLGov.net) and search under Economic Development for more business services, workshops, and resources

## 3. Stay Informed

Get Connected. Stay Alert.

- **HCFL Alert** is Hillsborough County's official mass notification system, to keep everyone informed about emergencies. Register at [HCFLGov.net/HCFLAlert](http://HCFLGov.net/HCFLAlert).
- Follow Hillsborough County's official social media accounts @HillsboroughFL on **Facebook** and **Twitter**, and sign up for **Nextdoor**, for official information and updates during emergencies.





# Preparing for All Disasters

While hurricanes are the most talked about, there are other disasters that may occur at any time. Residents should take steps to prepare for all hazards and disasters.



## Lightning and Thunderstorms

- If thunder roars go indoors
- Stay inside for at least 30 minutes after thunder stops
- Do not use trees for cover
- Do not lie down in an open area
- Stay away from bodies of water
- Find a place to take cover, like a restroom in a park, a shelter on a beach, or inside a nearby business



## Tornadoes

- Know the terms of a tornado threat:
  - Tornado Watch: tornadoes are possible, remain alert
  - Tornado Warning: tornadoes are confirmed, take shelter
- Head to an interior room without windows on the lowest floor of the building
- Never stay in an automobile
- If you are outside with no shelter, lie down in a low lying area, flat on the ground with your head covered



## Wildfires

- Keep your home ready by removing dry leaves and plants within 5 feet of your house
- Report a fire to authorities immediately
- If ordered to evacuate, do so immediately
- Do not return until officials say it is safe to do so



## Active Shooter

- If there is an active shooter in your vicinity:
- Run if there is an easy escape path and evacuate the area
- If running is not possible, find a place to hide from the shooter
- As a last resort, if you cannot run or hide, fight



## Pandemic Disease

- Get routine and travel-related vaccines
  - Wash hands frequently with soap and water or hand sanitizer
  - Avoid contact with sick people
  - Stay home if you feel sick
  - Cover your mouth and nose with a face mask when around others
  - Follow all other CDC recommendations
- Monitor the news and [HCFLGov.net/StaySafe](http://HCFLGov.net/StaySafe) for any recommendations not listed in this guide



## Marine Hazards and Rip Currents

- Do not swim against the current
- Stay calmly afloat and signal for help
- Escape the current by swimming parallel to the shoreline
- When out of the current, swim at an angle toward the shore



## Flooding

- Move to higher ground immediately
- Do not drive on or into a flooded roadway – turn around; don't drown



## Suspicious Behavior

- If you see something, say something
- You can report suspicious behavior to your local law enforcement agency or by calling **1-855-FLA-SAFE (1-855-352-7233)**



## Hazardous Materials Incident

- Listen for direction from authorities on evacuating or sheltering in place

## Additional Resources:

- Visit [HCFLGov.net/StaySafe](http://HCFLGov.net/StaySafe) for more information on disasters in Hillsborough County, more in-depth tips on how to make a plan, evacuation, and shelter in place information
- Visit [Ready.gov](http://Ready.gov) for more information about preparing for disasters and the government's role in response



# Hurricane Season in Hillsborough County (June 1 – November 30)

## Throw these 8 Hurricane Myths to the Wind

Don't let untrue claims about hurricanes put your family at risk. Hurricane season spawns lots of myths and disinformation. Here are eight of them:

Myth	Fact
Placing tape on windows helps prevent glass from breaking in high winds.	If anything, tape holds together large chunks of glass that are more dangerous than small shards. Forget tape. Install shutters, plywood, or impact-resistant windows.
Wind is the deadliest part of a hurricane.	It's water. About half of hurricane-related deaths in the United States are attributed to storm surge, the sea level rise caused mainly by a tropical system pushing water toward the coast. Flooding due to rain is another major killer.
I'm not in the track "cone of uncertainty," so I'm OK.	The cone shows the possible path of the center of a storm. It does not depict potentially destructive weather which can extend far beyond.
Emptying the swimming pool keeps it from overflowing into your house during heavy rains.	This precaution doesn't hold water. Saturated ground can lift an empty pool. A pool filled with water is more likely to stay put.
Get as far away as possible from a storm's projected path.	When evacuating, go to a safe location where your family can ride out the storm, such as a hotel or friend or family member's home. <b>Staying at a hurricane shelter is the last option.</b>
After a storm passes, you're safe.	People die or are badly injured removing debris from their homes and yards, falling off ladders while making repairs, accidentally touching high-voltage power lines, entering floodwaters, and becoming overheated. Be sure to remove debris safely and with the aid of others.
Your homeowners insurance has you covered.	Most policies do not pay for repairs or losses due to floodwater. That often requires an additional policy, or a rider to the one you have.
It can't happen where I live.	Floridians who say they live in an area where hurricanes don't hit, or a storm struck last year so it won't happen again, are wrong. Long-term hurricane season forecasts, as well as days-out predictions of a hurricane's path, are unreliable. It's wise to prepare, every year.



## Prepare Your Property

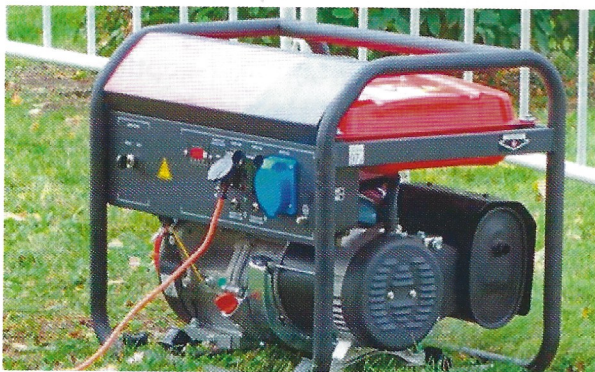
Hurricanes, tropical systems, and even intense afternoon thunderstorms can cause serious damage. Here are steps you can take to get your property disaster ready:

- Remove trees with rotting trunks, and trim limbs and shrubs near your house.
- Clean rain gutters and drain pipes, ensuring no obstacles block the flow of water.
- Move patio furniture, potted plants, bird baths, and other lightweight, unsecured items indoors. Items that can't be moved indoors should be tied down or secured.
- Turn over objects that collect rainfall and can become breeding grounds for mosquitoes.
- Keep your insurance information and other important documents in a fireproof, waterproof safe or box. Inventory everything you have with video or photos.



Renters should also be prepared to weather a storm. Renters should consider getting insurance to protect their belongings. Landlords should make sure tenants know if there are any responsibilities they must take care of on the property. Both parties should consider exchanging emergency information, in case it's needed.

**Mobile and manufactured home residents should know that if an evacuation is called they must evacuate – no matter where their home is located in the County.** All mobile and manufactured homes are considered to be in Evacuation Zone A.



## Portable Generators

When a disaster cuts off electricity in your neighborhood, a portable generator can be your best friend. Or, it can cause serious harm. If you rely on a generator to provide power in an outage, it's critical to know how to use it properly.

Do	Don't
Run your machine a few times during the year, to ensure its ready when you need it.	Place a running generator inside your home or garage. The exhaust is deadly.
Have plenty of fresh fuel to power your generator.	Store fuel in your home or garage near fire hazards.
Check the oil and use heavy-duty, properly grounded extension cords.	Connect a generator to your home electrical box or exceed the wattage of your generator's capacity without the help of a licensed electrician.



# Evacuation Zones vs. Flood Zones

Though they are often mistaken for each other, Flood Zones and Evacuation Zones are two very different things. So what's the difference? When do you use them? Here is what you need to know:

Evacuation Zones	Flood Zones
<p>These are areas that may be ordered to evacuate during a hurricane. These zones are mapped by the National Hurricane Center and indicate areas that will be affected by storm surge.</p> <p>Zones in Hillsborough County are identified from A - E, and there are parts of the county that are not in an evacuation zone. On the other hand, all mobile and manufactured homes are considered Zone A, regardless of where they are in the county.</p>	<p>These federally identified zones indicate a property's risk for flooding throughout the year. This zone has nothing to do with hurricanes or other emergencies, and everything to do with your property insurance and building requirements. Every property is in a flood zone.</p>

It's important to know both your Flood Zone and your Evacuation Zone, and the difference between them. You can find out your evacuation and flood zones by using the tools at [HCFLGov.net/StaySafe](http://HCFLGov.net/StaySafe).

Still unsure? Here's a helpful guide on when to use which map:

When to check your Evacuation Zone	When to check your Flood Zone
<ul style="list-style-type: none"> <li>• Before hurricane season to make sure your family is prepared</li> <li>• During a hurricane or major storm, to know if you should evacuate</li> </ul>	<ul style="list-style-type: none"> <li>• If you own, rent, or are buying a new property and don't know if you need flood insurance</li> <li>• If you refinance or get a mortgage</li> <li>• If you need building permits for work on your property</li> </ul>

## Storm Surge: Real Threat, or Hollywood Myth?

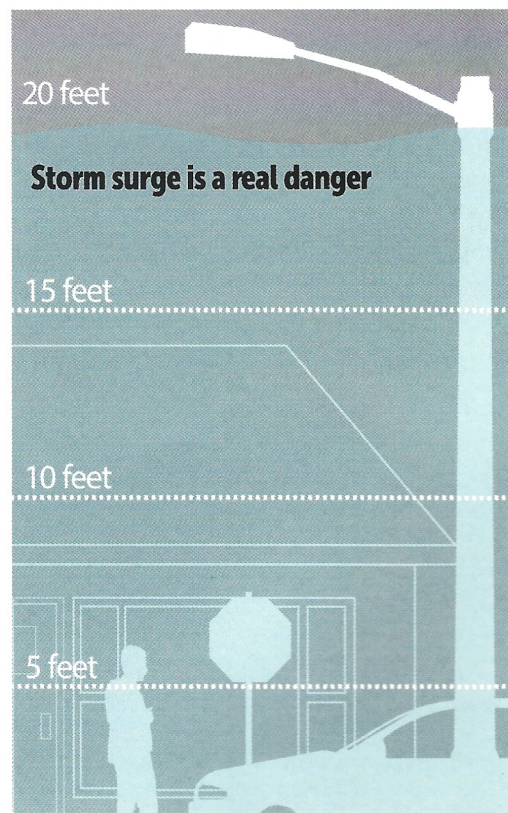
You may have noticed tall signs in your neighborhood warning you about storm surge. Those aren't real, right? Wrong.

Storm surge is what happens when water from the ocean is pushed to shore by weather like tropical storms or hurricanes. During hurricane season, storm surge is one of the primary threats to Hillsborough County residents, and one of the factors that determine whether your neighborhood will be ordered to evacuate.

## Making and Using Sandbags

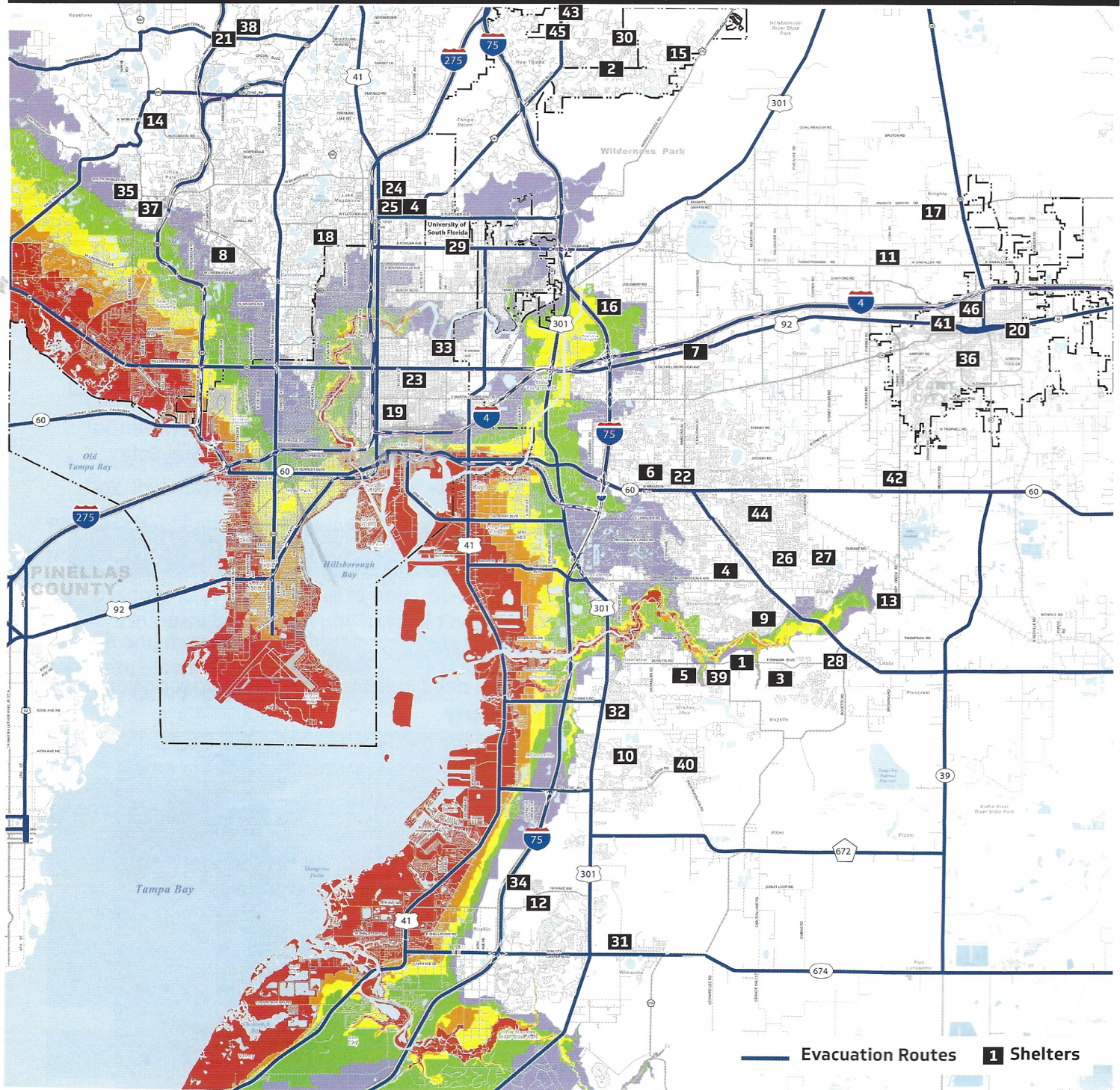
When used correctly, sandbags may be useful in redirecting stormwater and debris from your home. However, there are some limits to what sandbags can do.

Learn about making and using sandbags, at [HCFLGov.net/StaySafe](http://HCFLGov.net/StaySafe).





# Hillsborough County Evacuation Zones



**Note: This is a quick reference map. For a more detail map visit:**

[tbrpc.org/wp-content/uploads/2019/04/English-Common-Side.pdf](http://tbrpc.org/wp-content/uploads/2019/04/English-Common-Side.pdf)

Data provided courtesy of the Tampa Bay Regional Planning Council. Visit [www.tbrpc.org](http://www.tbrpc.org) for further information.

## Legend

Evacuation Level	Wind Velocity (MPH)	Potential Tide Heights (FT)	Areas To Be Evacuated
A	74 to 85	To 11'	Red areas plus all mobile home residents.
B	96 to 110	To 17'	Red and Orange areas plus all mobile home residents.
C	111 to 130	To 22'	Red, Orange, and Yellow areas plus all mobile home residents.
D	131 to 155	To 31'	Red, Orange, Yellow, and Green areas plus all mobile home residents.
E	156 and over	To 38'	Red, Orange, Yellow, Green, and Purple areas plus all mobile home residents.



	Shelter Names	Address	Pets
1	Barrington Middle	5925 Village Center Dr	✓
2	Benito Middle	10101 Cross Creek Blvd	
3	Bevis Elementary	5720 Osprey Ridge Dr	
4	Bowers-Whitley	13609 N. 22nd St	
5	Boyette Springs Elementary	10141 Sedgebrook Dr	
6	Brandon High	1101 Victoria St	
7	Burnett Middle	1010 N Kingsway Rd	✓
8	Canella Elementary	10707 Nixon Rd	
9	Cimino Elementary	4329 Culbreath Rd	
10	Collins Elementary	12424 Summerfield Blvd	
11	Cork Elementary	3501 N Cork Rd	
12	Cypress Creek Elementary	4040 19th Ave Ne	
13	Durant High	4748 Cougar Path	✓
14	Hammond Elementary	8008 N Mobley Rd	
15	Heritage Elementary	18201 East Meadows Rd	
16	Jennings Middle	9325 Govenors Rd	
17	Knights Elementary	4815 N Keene Rd	
18	Lake Magdalene Elementary	2002 Pine Lake Dr	
19	Lockhart Elementary	3719 N 17th St	
20	Marshall Middle	18 South Maryland Ave	
21	McKitrick Elementary	5503 Lutz Lake Fern Rd	
22	McLane Elementary	306 N Knights Ave	
23	Middleton High	4801 N 22nd St	
24	Mort Elementary	1806 Bearss Ave	
25	Muller Elementary	13615 N. 22nd St	
26	Mulrennan Middle	4215 Durant Rd	
27	Nelson Elementary	5413 Durant Rd	
28	Newsome High	16510 Fish Hawk Blvd	
29	Pizzo Elementary	11701 Bull Run	
30	Pride Elementary	18271 Kinnan St	
31	Reddick Elementary	325 West Lake Drive	
32	Sessums Elementary	11525 Ramblecreek Dr	
33	Sheehy Elementary	6402 N 40th St	
34	Shields Middle	15732 Beth Shields Ways	✓
35	Sickles High	7950 Gunn Highway	✓
36	Simmons Career Center	1202 W Grant St	
37	Smith, Sgt. Paul Middle	14303 Citrus Pointe Dr	✓
38	Steinbrenner High	5575 W. Lutz Lake Fern Road	✓
39	Stowers Elementary	13915 Barrington Stowers Dr	
40	Summerfield Elementary	11990 Big Bend Rd	
41	Tomlin Middle	501 N Woodrow Wilson	
42	Turkey Creek Elementary	5005 S. Turkey Creek Rd	✓
43	Turner/Bartels Middle	9020 Imperial Oak Blvd	✓
44	Valrico Elementary	609 South Miller Rd	
45	Wharton High	20150 Bruce B Downs	✓
46	Wilson Elemenatry	702 English St	

## Emergency Shelters

In the event of an emergency, Hillsborough County has emergency shelters for residents and visitors. **Shelters are a last resort**, and should be used only if you have no other options for evacuation. Residents should evacuate with friends or family or to a hotel/motel outside of the evacuation zone if possible.

If you must evacuate to a shelter, be advised:

- Shelters are opened on an “as-needed” basis
- Shelter openings may vary with each emergency
- Never go to a shelter unless local officials have announced it is open

**Stay informed on shelter locations and openings by signing up for updates at [HCFLGov.net/HCFLAlert](http://HCFLGov.net/HCFLAlert). All schools are ADA compliant.**

## General Population Emergency Shelters

These shelters are intended to provide immediate protection and save the lives of those in the path of a catastrophic and deadly storm. If you do need to shelter in a County evacuation shelter keep in mind:

- Evacuation shelters may not have cots, blankets, or supplies like face masks and hand sanitizer.
- Each resident may only have space the size of approximately one sleeping bag
- Bring your disaster kit with water, food, bedding, medications, hygiene items, and any other specific items you might need for your family. See **page 5**
- Alcohol, illegal drugs, and weapons are not permitted





## Pet-Friendly Emergency Shelters

Hillsborough County offers limited pet-friendly shelters. To use a pet-friendly shelter you must:

- Bring proof of current rabies vaccination and license for dogs and cats
- Place pet on a leash or in a carrier
- Bring a crate large enough for your pet to stand up and turn around. Cats need a crate large enough to contain litter and food/water
- Bring pet supplies including: food, water, litter, treats, cleaning supplies, medications, etc.

You are responsible for the care of your pet while in the shelter. **Cohabitation of pets and owners is not permitted**



## Special Needs Shelters

Hillsborough County residents with special needs can register for special needs shelters through the Florida Health Department in Hillsborough County by visiting [HCFLGov.net/StaySafe](http://HCFLGov.net/StaySafe) or [hillsborough.floridahealth.gov](http://hillsborough.floridahealth.gov)

Those with special needs include:

- Someone with a medical condition that requires periodic observation, assessment, or maintenance
- Someone who depends on electricity for medical equipment, such as an oxygen machine or feeding tube
- Someone who, in a health expert's opinion, might not fare well in a general population shelter

Registration before a storm expedites entry at the special needs shelter and assists shelters with planning. Residents not registered prior to a storm will be triaged onsite to determine if they meet eligibility

**Instructions for registration and more information is available at [HCFLGov.net/StaySafe](http://HCFLGov.net/StaySafe).**



## Important Contact Information

The following numbers may be useful in case of emergencies. Calling 911 should be reserved for emergencies only. For all the information found in this guide and more, you can visit [HCFLGov.net/StaySafe](https://www.hcflgov.net/StaySafe).

Disaster Related Information	Department / Agency	Phone Number	Website
Special Needs Shelter Registration	Florida Department of Health	(813) 307-8063	<a href="https://www.hcflgov.net/StaySafe">HCFLGov.net/StaySafe</a>
General information and assistance	Hillsborough County Customer Service Call Center	(813) 272-5900	<a href="https://www.hcflgov.net/StaySafe">HCFLGov.net/StaySafe</a>
Pet information	Hillsborough County Pet Resource Center	(813) 744-5660	<a href="https://www.hcflgov.net/StaySafe">HCFLGov.net/StaySafe</a>
Building and development information	Hillsborough County Development Services	(813) 272-5600	<a href="https://www.hcflgov.net/StaySafe">HCFLGov.net/StaySafe</a>
Solid waste information	Hillsborough County Solid Waste	(813) 272-5680	<a href="https://www.hcflgov.net/StaySafe">HCFLGov.net/StaySafe</a>
Business preparation and assistance	Hillsborough County Economic Development	(813) 204-9267	<a href="https://www.hcflgov.net/StaySafe">HCFLGov.net/StaySafe</a>
Law enforcement information	Florida Highway Patrol	(813) 558-1800	<a href="https://www.flhsmv.gov">Flhsmv.gov</a>
Law enforcement information	Hillsborough County Sheriff's Office	(813) 247-8000	<a href="https://www.teamhcso.com">Teamhcso.com</a>
Communications and internet information	Frontier	(800) 239-4430	<a href="https://www.frontier.com">Frontier.com</a>
Communications and internet information	Spectrum	(800) 267-6094	<a href="https://www.spectrum.com">Spectrum.com</a>
Natural gas utilities	TECO Peoples Gas	(877) 832-6747	<a href="https://www.peoplegas.com">Peoplegas.com</a>
Electric utilities	TECO	(877) 588-1010	<a href="https://www.tecoenergy.com">Tecoenergy.com</a>
Crisis counseling and service referral information	Crisis Center of Tampa Bay	211	<a href="https://www.crisiscenter.com">Crisiscenter.com</a>
Crisis counseling and service referral information	American Red Cross	(813) 348-4820	<a href="https://www.redcross.org">Redcross.org</a>
Crisis counseling and service referral information	Catholic Charities	(813) 631-4370	<a href="https://www.ccdosp.org">Ccdosp.org</a>
Crisis counseling and service referral information	Salvation Army	(813) 226-0055	<a href="https://www.salvationarmyflorida.org/tampa">Salvationarmyflorida.org/tampa</a>
Business preparation and assistance	Business Disaster Hotline	(813) 301-7458	N/A
Transit and emergency transportation information	Hillsborough Area Regional Transit (HART)	(813) 254-4278	<a href="https://www.gohart.org">Gohart.org</a>
Drainage issues, street flooding, or other flooding issues	Hillsborough County Public Works	(813) 635-5400	<a href="https://www.hcflgov.net/AtYourService">HCFLGov.net/AtYourService</a>